



Kenya Photo Expedition

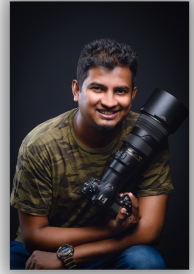
with
SerendipityNtravel Safaris
and
award winning wildlife photographer
Gimantha Perera

June 22nd - 29th, 2023

A LOW PRICE DURING THE HIGH SEASON!
TWO COMPLIMENTARY ONLINE SESSIONS BEFORE YOU LEAVE!

GIMANTHA PERERA

IS AN AWARD WINNING WILDLIFE PHOTOGRAPHER. A NPASL GOLD MEDALIST IN WILDLIFE, 2019 OVERALL WINNER OF WILD SRI LANKA, 2018 2ND RUNNER UP OF WILD SRI LANKA, 2021 AWARD WINNER IN STATE PHOTOGRAPHY COMPETITION SRI LANKA, AND OVERALL WINNER CHAMBER OF COMMERCE PHOTOGRAPHY COMPETITION ARE SOME OF HIS ACHIEVEMENTS. ADDITIONALLY, HE IS RANKED WITHIN THE TOP 5% IN FOUR THEMATIC COMPETITIONS AT "35 AWARDS" COMPETITIONS IN THE PAST 12 MONTHS COMPETING WITH PHOTOGRAPHERS FROM OVER 100 COUNTRIES IN EACH COMPETITION.



GIMANTHA HAS CONDUCTED MANY WORKSHOPS IN BASIC PHOTOGRAPHY, ADVANCED PHOTOGRAPHY TECHNIQUES, WILDLIFE PHOTOGRAPHY, AND LIGHTROOM EDITING.



PHOTOGRAPHS BY GIMANTHA PERERA

SerendipityNtravel Safaris

IS A FAMILY OWNED SAFARI OPERATOR BASED AND REGISTERED IN THE UNITED STATES, AND OPERATING IN KENYA. OWNING ITS OWN CUSTOMIZED SAFARI VEHICLES, EMPLOYING SOME OF THE BEST SAFARI DRIVER-GUIDES IN THE BUSINESS, AND OPERATING EXCLUSIVELY IN KENYA, THE COMPANY PROVIDES PRIVATE AND PERSONAL SAFARIS FOR ITS GUESTS. CAMPS AND LODGES ARE CAREFULLY CHOSEN FOR GUESTS ONLY AFTER THEY HAVE BEEN PERSONALLY CHECKED OUT AND MEET THE HIGH STANDARD OF ACCOMMODATION, FOOD, HOSPITALITY, AND CUSTOMER SERVICE.

THERE ARE NO TIME LIMITATIONS FOR GAME DRIVES, AND AS LONG AS THE PARKS ARE OPEN, OUR GUESTS CAN CHOOSE HOW LONG THEY CAN STAY IN AND PHOTOGRAPH WILDLIFE.



PHOTOGRAPHS BY SERENDIPITYNTRAVEL SAFARIS

Who Should Go With Us

This photographic safari is catered for the amateur photographer to the experienced wildlife photographer. The minimum requirement is that you bring along a point and shoot, SLR, or mirrorless camera with a suitable lens to photograph wildlife. You will have the opportunity to shoot thousands of photographs, get expert help and guidance, stay out in the field for an unrestricted time, and discuss photography with an experienced wildlife photographer. You should have patience to stay at one location to capture that shot that you always wanted. WE DO NOT GUARANTEE the Great Migration like others do. No one can guarantee an act of nature! If the migration happens while you are there, we will make sure to take you there!

If You Are A Photographer, Why You Should Go With Us

- This photographic tour is catered exclusively for photographers, and is not a safari to take a few photographs at a sighting and then move on. If needed, we will sometime stay with a sighting for an extended period of time
- Gimantha Perera, an award-winning wildlife photographer from Sri Lanka will travel with the group, and when needed, offering unlimited free advice, consultation, assistance, and the secrets of improving your wildlife photography.
- Photography advice, such as what gear to pack, and unlimited consultation will be offered after you have confirmed your trip.
- Our Driver-Guides have over a decade's experience in the Masai Mara, knowing every corner of it, and knowing the area where your target species often frequent, and positioning the vehicle for that best shot. Their knowledge in identifying both fauna and flora is exceptional, and you will be amazed at what they know.
- Each vehicle will have a maximum of four photographers, and you will be able to select and reserve your seat at the time of paying your deposit (On a first come, first served basis. Every main cabin photographer will have unlimited access to a full single row, enabling him/her unhindered window access to both sides of the vehicle, and roof hatch. You will not need to shoot over someone's shoulder or struggle to find space to take that shot you wanted.
- We are a registered and bonded travel provider in the United States, operating in Kenya. Your payment is secure with us due to strict laws and regulations in the US. With your payment being insured and bonded, there is no fear of bankruptcy, fraud, or even turning up at Nairobi airport and finding out that your safari provider in Kenya took off with your money (which has happened before)
- We own our vehicles in Kenya and do NOT use 3rd party vehicles, and each vehicle is not more than two years old. They are comfortable to travel in, and serviced and sanitized prior to every safari. We do not operate old vehicles that have been modified after being sold by a safari provider after it has reached its operational lifetime.
- Our accommodation is chosen only after we have personally stayed there and been completely satisfied with its location, quality, comfort, amenities, food, and customer service. Our small group of select accommodation is chosen only after it meets our high standards.

2023 JUNE ITINERARY

JUNE 22nd

Guests arrive in Nairobi. You will be picked up from the airport anytime your flight arrives and transferred to the Best Western Plus in Westlands, a very comfortable hotel, which we use frequently, and which boasts of a fantastic breakfast. We have specially selected this hotel as we want you to avoid the heavy downtown traffic when leaving on your expedition the following day. During the day you can relax in your room or by the poolside, or walk next door to the Sarit Center mall and explore the shops, or dine in the food court. Night at Best Western Westlands.

JUNE 23rd

After enjoying a hot breakfast, you will head north to Lake Naivasha. Your drive will take you through the low-lying areas of Nairobi and into the famous 'Great Rift Valley' which extends from Jordan (in the Middle East) to Mozambique in Southern Africa. The area is famous for its agriculture due to rich volcanic soil, and the many roses that are grown and exported around the world. We will stop at the viewpoint for a photo opportunity of the valley below. You will reach Lake Naivasha in time for lunch at Crescent Camp. After a short rest, you will leave on a boat ride on Lake Naivasha with an opportunity to photograph hippos and birds. You will also be able to photograph the many birds that fly into and around the camp premises. Return to Crescent Camp for dinner and overnight.

MEALS PROVIDED: B, L, D.

JUNE 24th

After breakfast, you will depart for the Masai Mara. You will reach the entrance of the Masai Mara by noon, and take your first game drive in the northern end of the Mara, reaching Zebra Plains Camp for a late lunch. Your afternoon can be spent resting in your tent or resting on the exterior deck, while animals walk by. By around 3:45 you will depart for your evening game drive in the Masai Mara. Dinner and night at Zebra Plains Camp.

MEALS PROVIDED: B, L, D.

JUNE 25th to the 28th – Four full days!

Your hot breakfast will always be served at camp before we head out on our game drives. Your first couple of days we will concentrate on the northern area of the Mara, where the area is frequented by leopards, cheetahs, giraffes, zebras, warthog, and a variety of gazelle. With many hiding spots in the terrain, you never know what you will find. We will often pack a picnic lunch so that we can stay out in the wild all day and combine our morning game drive with the evening game drive. On a couple of days, we may also return to camp after our morning game drive for a hot lunch and brief rest, before setting off on our evening game drive.

We will visit the Mara River to photograph the Nile crocodiles and the many families of hippos, sometimes diverting to lions on the way. Since June is the start of the great migration, there is a possibility (not guaranteed!) of seeing wildebeest and river crossings. Your Driver-Guides each have over 15 years of experience in the Masai Mara and will take you to areas where other safari companies will not take you.

Returning to camp (and we know the locations!), if the weather is good, you will enjoy and shoot some of the best sunsets in Kenya. Gather round the bonfire at night and have a one-on-one with Gimantha who will critique your shots if requested, and also advise you on possibilities to make them better. Dinner and night at Zebra Plains Camp.

MEALS PROVIDED: B, L, D.

JUNE 29th

After breakfast at camp, you will check out of Zebra Plains Camp and go on your final game drive. Your Driver-Guide will change his route or even change direction if notification of unusual or good sightings come in. Late morning, you will exit the Masai Mara and head towards Nairobi, stopping on the way for lunch. Arriving in Nairobi, you will be transported to the airport for your night flight or dropped off at your hotel.

MEALS PROVIDED: B, L.

ACCOMMODATION

CRESCENT CAMP - LAKE NAIVASHA

This is one of our newer camps at Lake Naivasha. Located close to the road leading to the Masai Mara, it is at a convenient location, saving you driving time. The spacious and large tents are some of the largest we have come across. With the property bordering Lake Naivasha, many birds are “residents”, along with a small group of hippos that sometime graze on the grass at night and often coming close to the tents. The camp has a delicious spread of meals, and a hearty breakfast before the long drive to the Masai Mara.



ZEBRA PLAINS CAMP – MASAI MARA

One of the little secrets of the safari world, and definitely our favorite camp. You will sleep in large spacious luxury tents with en-suite hot water showers and flushing toilets. The camp overlooks a savanna where zebras, gazelle, and other wildlife roam. Some of the best sunsets in Kenya can be seen across the plains, while drinking a 'cold one' after your game drive. The camp has no fences, but is guarded day and night by Masai warriors. Two lounges with comfortable seating overlook the plains and the sunsets.



FREQUENTLY ASKED QUESTION

IS IT SAFE TO TRAVEL TO KENYA? Many travelers from the USA, Europe, Asia, and Australasia travel to Kenya. There is less crime here than in the US, Asia, or Europe. While in the wild, you will experience sincere hospitality from the Masai people that survive on the income from safaris. There has been no major crime in the reserves for over a decade as they know that to protect the visitors and have the highest level of safety ensures a constant flow of visitors that guarantee their livelihood.

WILL THE WILD ANIMALS ATTACK? While no place in the world can guarantee your safety, no known animal attack has been documented recently. The rules are strict, and you will not be allowed to walk on foot in the jungle, and when you are at the few places that you can get off briefly, following the instructions of your Driver-Guide. You will have animals, including the big cats, come within a few meters of your vehicle, and they pose no danger to you as they identify the vehicle as a 'friend' that will not harm them.

DO I NEED ANY VACCINATIONS TO ENTER KENYA? Kenya is one of the few countries in Africa that does not require shots to enter, unless you are arriving from a country that has been declared a "Yellow Fever" country. While everyone's medical situation is different, you will need to speak to your doctor about this.

ARE ALL MEALS PROVIDED? Yes, all meals are provided while on safari, and as indicated in the itinerary. There is a vegetarian and Vegan menu available as well. A hot 'American style' breakfast is provided in the morning with tea and coffee, and lunch will be a buffet or a la carte if eaten in camp, or a packed lunch to eat in the bush. Dinner is often a variety of Eastern and Western food with a variety of meat and vegetables.

WHAT TYPE OF VEHICLE IS PROVIDED? While most safari providers in Kenya run safaris with small white vans or old vehicles which are unsafe, our vehicles are 4WD custom 7 seat safari vehicles. We guarantee a window seat and only take 4 passengers in a vehicle, which means that you will not be shoulder to shoulder with anyone, and have a comfortable seat. The vehicles have large windows and pop-up roofs for a great view. NOTE: As our safari vehicles travel through rivers and rough terrain, if you have a back problem, we suggest that you talk to us first before you make a reservation.

WHAT TYPE OF TOILETS ARE THERE ON SAFARI? Our camps and lodges have permanent fixed flushing toilets and showers. All bathrooms are inside the tent. While on your game drive, you will use the "bush toilets"!

IS DRINKING WATER SAFE? Complimentary drinking water is provided during your safari. Bottled water during dinner can be purchased, and any bottled water needed while at camp can be purchased at a supermarket before the safari.

IS THERE ELECTRICITY IN OUR ACCOMODATION? Yes, both the camps we will be staying in have 24-hour electricity.

CAN I SMOKE WHILE ON SAFARI? Smoking is not permitted inside the safari vehicle, or inside any of the parks. Smoking is permitted in designated areas at the camps.

COST - \$2600 each, based on double occupancy in a tent/room. A maximum of four passengers in a safari vehicle. *A low season rate during the high season!*

Single Supplemental: Should you wish to have a single room during the entire photo safari you will only pay \$2845. *An unbeatable offer of only \$245 extra!*

WHAT IS INCLUDED

- Accommodation in specially selected luxury tented camps
- All meals from breakfast on the first day of safari to lunch on the last day of safari
- Licensed English speaking Driver-Guide
- Complimentary drinking water while on game drives
- Park entrance fees
- All taxes, service charge, and VAT
- Star class accommodation in Nairobi on the night before departing on safari
- Complimentary Nairobi airport pick-up and drop-off
- Application and payment of your Kenya visa *New!*
- Group travel insurance provided at no extra charge *New!*
- Assistance in booking air travel
- TEN game drives and one boat photography safari ride. We use our very own 4WD well maintained safari vehicles and do not depend on 3rd party vehicles.
- Twenty meals

TWO PRE-TOUR COMPLIMENTARY PHOTOGRAPHY ONLINE SESSIONS!

WHAT IS NOT PROVIDED

Airfare, telephone calls, any extra food and drinks (excluding the meals already provided), laundry, phone calls, tips, driver gratuities, PCR/Covid related tests and vaccines.

Customary Driver- Guide gratuity is \$10 a day.

The process....

1. Contact us at mail@kenyasafari.us. We will get back to you to schedule a one-on-one meeting online where we can answer all your questions.

2. Pay a deposit of \$1000 per guest. You will then be able to select your seat from the seat map. While there is no “bad” seat and as **each guest has window access on both sides of the vehicle** (except the front passenger seat), seat selection is on a first-come, first served basis. Full payment is due by March 2nd, 2023.

3. Purchase your airline ticket as soon as possible. We will assist you in getting the best available fare. Ticket prices change regularly according to passenger demand, loads, and other factors. A price that you see today may not be available tomorrow, and sometimes prices increase by over a couple hundred dollars, which can seriously impact your budget.

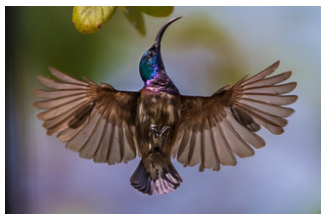
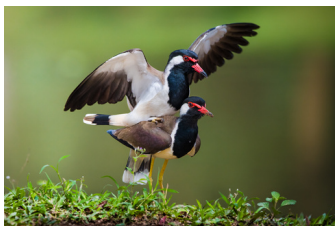
OUR GUARANTEE TO YOU is that once you have paid your initial deposit, your price will never increase even if prices go up due to increase in oil prices, unusual events, accommodation price raise, increase in park entrance fees, or raises in taxes and permits.

Payment can be made via credit card, Venmo, Paypal, Western Union, or direct bank transfer. We accept payment only in US\$, Euro, and British Pounds.

Note: You do have the choice of paying more than your minimum payment due ahead of time.

Until you depart home, we will keep you updated on what to pack, what to expect, recommendations, the international visa information, currency, and emergency 24-hour contact numbers.

Upon arriving in Nairobi and until departure, your experienced Driver-Guide will be your concierge and personal assistant. He will be staying in special accommodation at all the camps and lodges. He can also help you get to the closest ATM, take you to purchase snacks and drinks, and answer all your questions during your expedition.



**IMPORTANT: PROOF OF BEING FULLY VACCINATED IS REQUIRED
TO ENTER KENYA. A PCR COVID TEST TAKEN BEFORE
DEPARTURE MAY BE SUBSTITUTED FOR THE COVID TEST.**



Website: www.KenyaSafari.us

E-Mail: mail@KenyaSafari.us

Facebook Page:

**[https://www.facebook.com/SerendipityNtravel-Safaris -
1928768100684617/](https://www.facebook.com/SerendipityNtravel-Safaris-1928768100684617/)**

Phone or Whatsapp: +1 714 213 4961